

2010 Sundance Spas 880 Maxxus

Specifications

Dimensions:	90" x 110" x 41.5" (229 cm x 279.5 cm x 105.5 cm)
Seating Capacity:	6 Adults
Dry Weight:	1,117 lbs (507 kg)
Filled Weight:	6,708 lbs (3,043 kg)
Water Capacity (Spa Volume):	670 US Gal (2,536 Liters)
Water Capacity (Average Fill):	550 US Gal (2,082 Liters)
Controls:	880 Series Solid State, LCD User Interface Displays Temperature, Time, Cycles and Fingertip Jet/Air System Control. Offers Customizing of Preprogrammed Filtration Cycles and Water Temperature Setting
Water Delivery:	3 TheraMax High-Flow Pumps and 12-Hour Dynamic Flow Circulation System
Pump 1:	North America (60 Hz): 1-Speed/2.5 HP Continuous, 11.3A Max. Export (50 Hz): 1-Speed/2.0 HP Continuous, 7A Max.
Pump 2:	North America (60 Hz): 1-Speed/2.5 HP Continuous, 11.3A Max. Export (50 Hz): 1-Speed/2.0 HP Continuous, 7A Max.
Pump 3:	North America (60 Hz): 1-Speed/2.5 HP Continuous, 11.3A Max. Export (50 Hz): 1-Speed/2.0 HP Continuous, 7A Max.
Pump 4:	High-Output Dynamic Flow, 12-Hour Filter/Circulation Pump (35 gpm) Programmable for Daily Start Time and Duration
Total Hydrojets:	57
Diamond Lounge Jets (A):	3 Fluidix Intelli-Jet, 2 Fluidix Nex, 2 Pulsator, 2 Vortex
Accu-SSage Therapy Seat Jets (B):	12 Fluidix-ST, 2 Fluidix Nex, 2 Pulsator, 4 Accu-Pressure, 1 Whirlpool (sidewall)
Therapy Seat Jets (C):	6 Fluidix Reflex, 2 Fluidix Nex, 2 Pulsator, 2 Accu-Pressure
Comfort Seat Jets (D):	4 Vortex, 2 Fluidix Nex, 1 Whirlpool (sidewall)
Footwell Jets (E):	8 Accu-Pressure
Air Blower:	High-efficiency, 1-Speed
Aromatherapy Delivery:	14 Air Injector Jets with Quiet High Speed Air Pump
Air Controls/Massage Selectors:	8/2 (Standard Air controls with LED light rings)
Filter:	MicroClean Ultra Filtration System, 130 ft ² (2 interlocking cartridge filters)
Water Treatment:	Automatic Brominator and Dynamic Flow Circulation System; Ozone Adaptable
Lighting:	AquaTerrace Multicolored Sunglow LED Lighting System (2 Waterfall, 2 Footwell, 8 Air controls, 2 Backlit handrails)
Synthetic Cabinet:	Available in Sierra, Coastal, and Mahogany
Shell Colors:	Platinum, Sahara, Copper Sand, or Celestite (Gypsum)
Handrails:	Two High Quality Stainless Steel with backlit LED lighting
ComfortTone Headrests:	Four 2-Part/2-Tone Gray
Heater:	5.5 kW With Titanium Element
Electrical Requirements:	North America (60 Hz): 240 VAC@50A or 60A; Export (50 Hz): 230-240 VAC@40A, 50A or 60A; or Suitable Rated Circuit Breaker To Comply With Local Electrical Regulations. Certain Countries May Require 2 Power Inputs; Two GFCI/RCD Breakers are Required For This Configuration.
Limited Warranty*:	North America (60 Hz): 10 Years Shell, 7 Years Shell Surface, 5 Years Plumbing Component Leaks, 5 Years Equipment and Controls, 5 Years Cabinet, 5 Years Jets Export (50 Hz): 10 Years Shell, 7 Years Shell Surface, 2 Years Plumbing Component Leaks, 2 Years Equipment and Controls, 2 Years Cabinet, 2 Years Jets
Waterfall Feature:	Adjustable Flow Rate; Colored Back-Lighting
Special Features:	Optional Factory Installed Intelli-Sound Audio System with Deluxe Wireless Remote Control, iPod Docking Station, Auxiliary 3.5 mm jack for MP3 Player, 1 (GB) hard drive, USB port, and CD/AM/FM radio
Inground Model:	Not Available

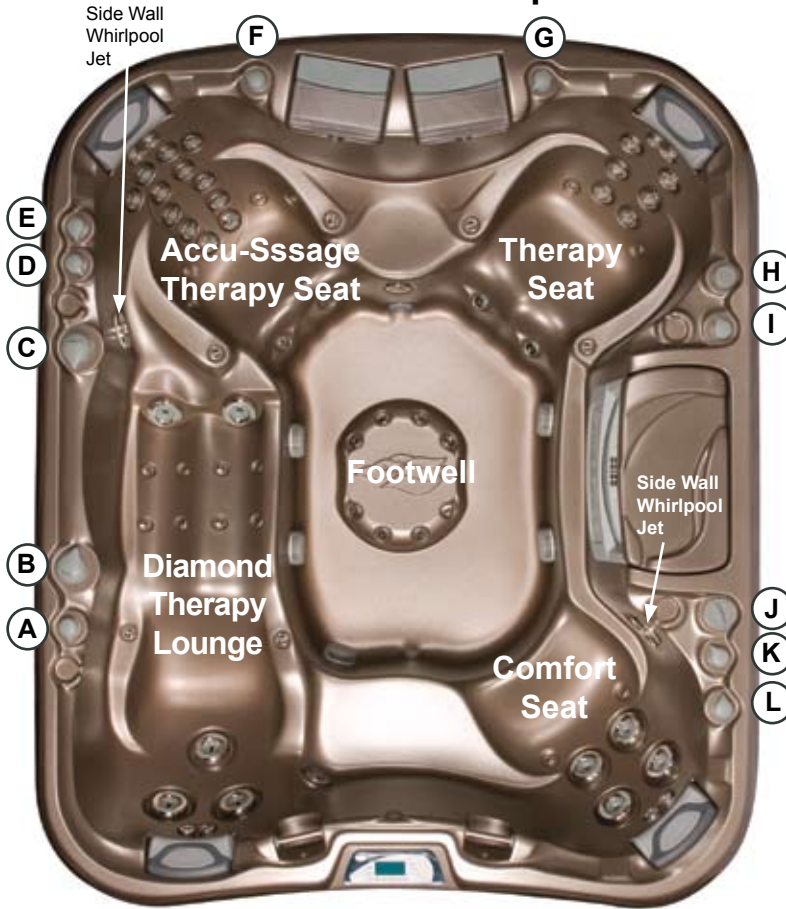


*(See Warranty Document for Specific Details)

Dimensions/Specifications Subject To Change Without Notice

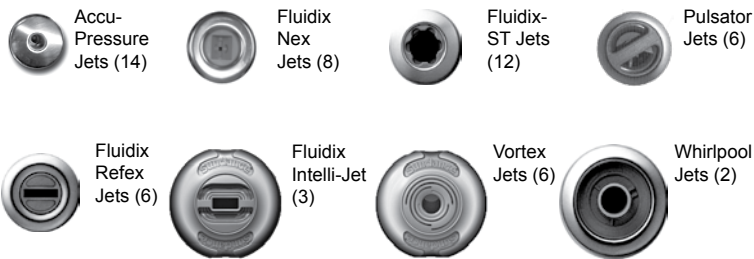
2010 Sundance Spas 880 Maxxus

Operation/New Features



- (A)** Air Control - Adjusts Diamond Therapy Lounge Jets (3 Fluidix Intelli-Jet, 2 Fluidix Nex, 2 Pulsators, 2 Vortex)
- (B)** Massage Selector [Pump 1] - Adjusts Massage Level Between All Diamond Therapy Lounge Jets and Comfort Seat Jets
- (C)** Massage Selector [Pump 2] - Adjusts Massage Level Between the Upper Accu-Ssage Therapy Seat Jets + both Wrist Jets and Lower Accu-Ssage Therapy Seat Jets + both Sidewall Whirlpool Jets
- (D)** Air Control - Adjusts Lower Accu-Ssage Therapy Seat Jets (6 Fluidix-ST, 2 Pulsators)
- (E)** Air Control - Adjusts Upper Accu-Ssage Therapy Seat Jets (2 Fluidix Nex and 6 Fluidix-ST)
- (F)** Air Control - Adjusts Lower Accu-Ssage Therapy Seat Jets (4 Accu-Pressure) and Sidewall Whirlpool Jet
- (G)** Air Control - Adjusts Center Footwell Jets (8 Accu-Pressure)
- (H)** Waterfall Selector [12-Hour Circ. Pump] - Controls Waterfall Output
- (I)** Air Control - Adjusts All Therapy Seat Jets (2 Fluidix Nex, 2 Pulsators, 6 Fluidix Reflex, 2 Accu-Pressure)
- (J)** SunScents Dispenser
- (K)** Air Control - Adjusts Sidewall Whirlpool Jet in Comfort Seat
- (L)** Air Control - Adjusts All Comfort Seat Jets (4 Vortex, 2 Fluidix Nex)

57 Total Jets




• Jets Pump 3: All Therapy Seat Jets and Footwell Jets are always on when this pump is running

Spa Operation Subject To Change Without Notice

NEW FOR 2010!

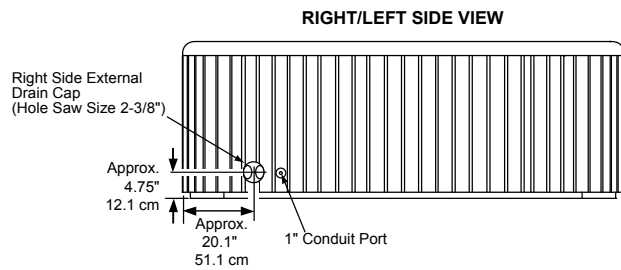
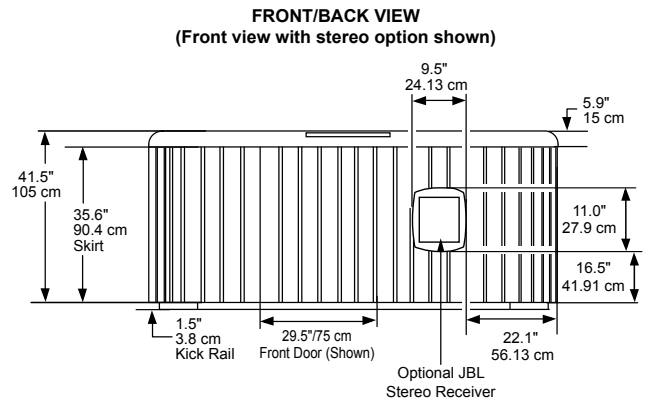
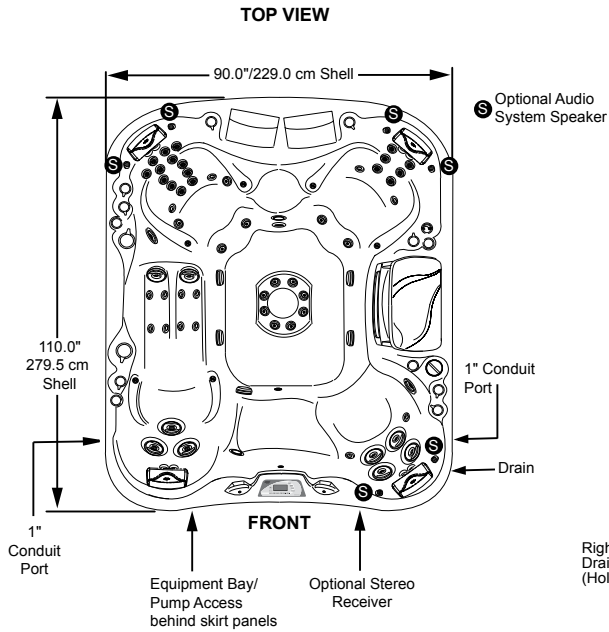

2 Vortex Jet replaced 2 Fluidix Intelli-Jets


New Aquatic Remote

Dimensions/Specifications Subject To Change Without Notice

2010 Sundance Spas 880 Maxxus

Portable Dimensions



IMPORTANT! Always measure each hot tub for exact dimensions BEFORE designing its foundational support and/or decking.

